

The REAL Solution.

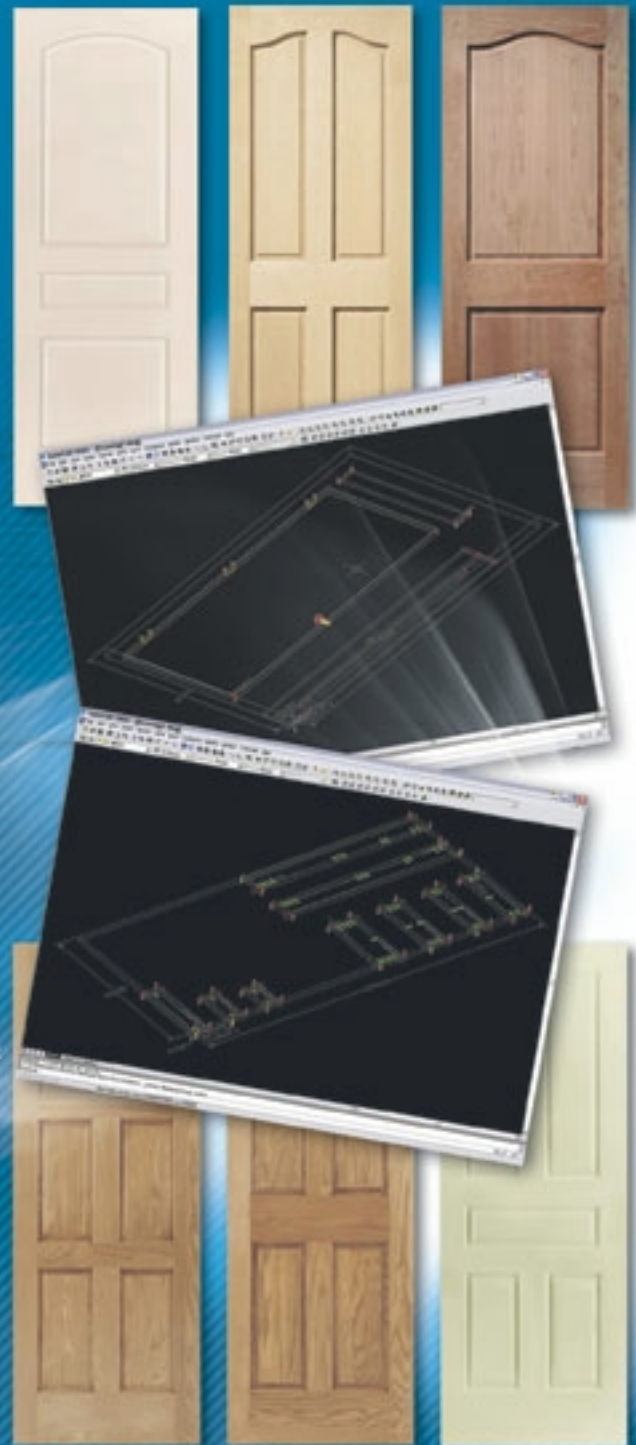
Entry Door™

Automatic Door Production and Machining

- Parametrically engineer and manufacture all types of doors
- Combines door making & hardware machining into one solution
- Supports stile, rail and panel construction
- Produces all parts lists and machining data
- Cut & machine door frames simultaneously
- Full AutoCAD integration to view and edit all machining
- Automatic code generation for all routers and machining centers
- Laser projection for automatic work zone placement of individual parts
- Gives you 100% Control – 100% Accuracy
- Control unlimited number of user-defined variables
- Straight forward and powerful programming in Excel
- Full CADCode integration for cell based or nest based manufacturing

CADCODE SYSTEMS

Quick**CAM**
FOR WOODWORKING 



Product Information:

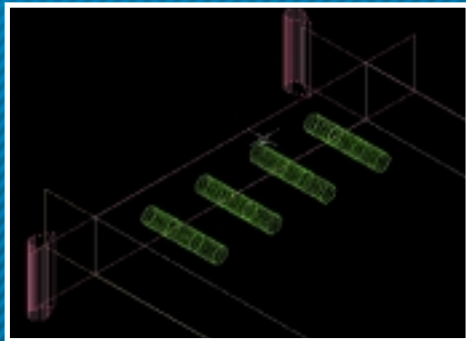
Entry Door™

Automatic Door Production and Machining

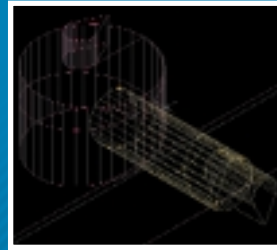
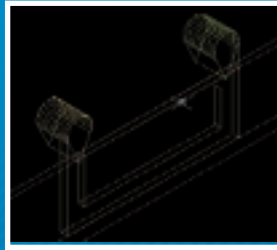
QuickCAM Door Manufacturing takes a big step forward in technology with a powerful and easy to use system for manufacturing and machining doors. Whether you are just machining for hardware on doors and frames or making complex stile and rail doors, QuickCAM Entry Door offers unbelievable flexibility and power.

QuickCAM combines the actual door manufacturing with the hardware machining requirements for the finished doors and frames offering you capabilities such as:

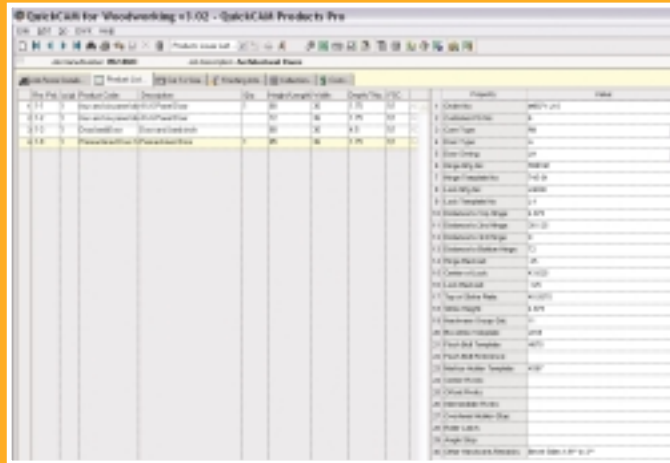
- Stick and cope machining of the stiles and rails
- Drilling for dowels and routing for mortise and tenon joints



- Raised panel sizing and shaping
- Finished door sizing and beveling
- Routing for hinges, locksets, flush bolts, mortise locks, roller latches, strike plates
- Header rabbets, routed stops, cutouts for lites, machining for louvers.



All of these items are parametrically controlled and all user-defined variables are simply selected or entered from the order entry screen. All layouts and machining can be sent to AutoCAD for verification and editing prior to code generation.



All hardware template selection & parametric variable entry is handled from one screen

The developers of QuickCAM Products chose to take advantage of the world's most popular math program, Excel from Microsoft, to give you, the manufacturer, the easiest possible environment in which to create programs. You have the ability to decide exactly how you want to manufacture and machine your doors and frames.

Integrated with CADCode's automation components both cell based and nested based manufacturing processes are fully supported.

CADCODE SYSTEMS

916 Route 601, Skillman, NJ 08558 Fax: (609) 466-0027
Toll-free: (877) 422-3263 www.cadcode.com
Telephone: (609) 466-0787 sales@cadcode.com

QuickCAM
FOR WOODWORKING

© 2002 - 2003 Country Cabinet Shop, Inc. Skillman, NJ. All rights reserved. Prices, policies, product descriptions and product specifications subject to change without notice. CADCode is a registered trademark of Country Cabinet Shop, Inc. dba CADCode Systems, NestLabels, NestLink, NestMaster, NestView, OptiLink, OptiNest, PartLink, PartMaster, PatternEditor, SawLabels, SawLink, SeeSaw, ToolboxX, and TransCode are trademarks of Country Cabinet Shop, Inc. dba CADCode Systems.

QuickCAM for Woodworking is a registered trademark of Lear Investments Pty Limited dba LearCom, Normanhurst NSW, AU. QuickCut, QuickTools, QuickParts, QuickProducts, QuickCAM Products, QuickCAM Products Pro, QuickDoor, QuickCAM MDF Door, QuickCAM MDF Door Pro are trademarks of LearCom.

AutoCAD® is a registered trademark of Autodesk Inc. Excel, MS Excel and Microsoft Excel are registered trademarks of Microsoft Corporation.

TPS 3403-0703