

The REAL Solution.

QuickDoor™

Quick and easy production of MDF doors and drawer fronts.

- Quick and Easy Order Entry
- Import door lists from many design systems
- Enhance your design program with MDF door capability
- Simple and easy parametric programming in Excel
- Style library stores unlimited user defined door styles
- Straight forward profile and tool settings management
- Control border widths and edge detail
- You have 100% Control – 100% Accuracy
- CADCode integration for automatic single part or nested manufacturing

CADCODE SYSTEMS

Quick**CAM**
FOR WOODWORKING 

Product Information:



QuickDoor™

Quick and easy production of MDF doors and drawer fronts.

QuickDoor™ is an attractively priced straightforward MDF door solution. Enter doors directly or read door lists from other design and order entry systems, apply a door style and that's it. Data is ready to send to CADCode and your machine.

Create your own library of door styles, define as many tool passes for your face and edge profiles as you need, control border widths at order entry, add any

comment and turn off edge detail on any edge, control any variable you want.

Fully supports nested based or single part manufacturing of MDF doors with CADCode integration. You are 100% in control of your door design creation and toolpaths. You are not restricted by the kind of canned limitations placed by other MDF door programs.

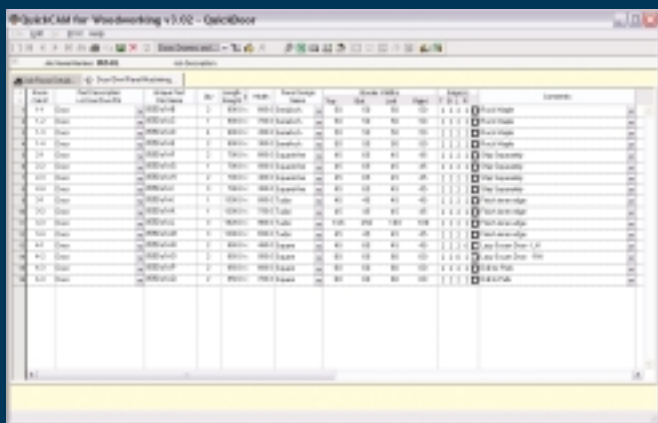
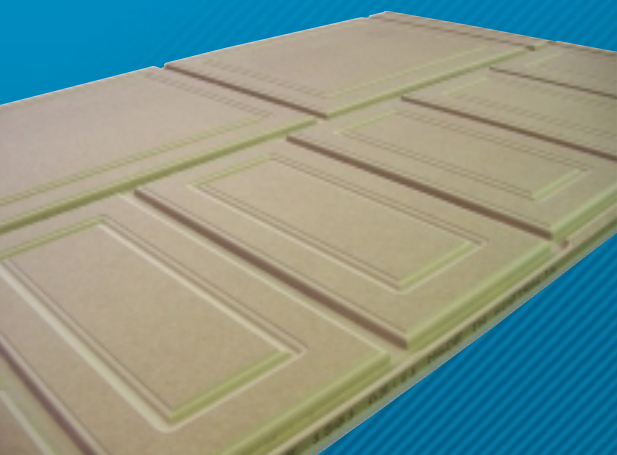
The developers of QuickCAM MDF Doors chose to take advantage of the world's most popular math program, Excel from Microsoft, to give the MDF Door manufacturer the easiest environment in which to create programs.

QuickDoor integrates with any design or order entry software that can output a list of doors and their sizes.

QuickDoor also links with CADCode Systems extensive collection of modular components within the



CADCode Automation Suite, including components for nesting, single part code generation, AutoCAD automation, real-time and on-demand labeling. Also link with other QuickCAM products for the most flexible parametric products engineering system in the industry.



ONE STEP



916 Route 601, Skillman, NJ 08558 Fax: (609) 466-0027
Toll-free: (877) 422-3263 www.cadcode.com
Telephone: (609) 466-0787 sales@cadcode.com



© 2002 - 2003 Country Cabinet Shop, Inc. Skillman, NJ. All rights reserved. Prices, policies, product descriptions and product specifications subject to change without notice. CADCode is a registered trademark of Country Cabinet Shop, Inc. dba CADCode Systems. NestLabels, NestLink, NestMaster, NestView, OptiLink, OptiNest, PartLink, PartMaster, PatternEditor, SawLabels, SawLink, SeeSaw, ToolboxX, and TransCode are trademarks of Country Cabinet Shop, Inc. dba CADCode Systems.

QuickCAM for Woodworking is a registered trademark of Lear Investments Pty Limited dba LearCom, Normanhurst NSW, AU. QuickCut, QuickTools, QuickParts, QuickProducts, QuickCAM Products, QuickCAM Products Pro, QuickDoor, QuickCAM MDF Door, QuickCAM MDF Door Pro are trademarks of LearCom.

AutoCAD® is a registered trademark of Autodesk Inc. Excel, MS Excel and Microsoft Excel are registered trademarks of Microsoft Corporation.

TP5 3391-0703