

The REAL Solution.

QuickCAM™ MDF Door

Automated design & production of doors & drawer fronts.

- Unlimited designs
- 100% Control –
100% Accuracy
- Control unlimited number
of variables
- Quick and Easy Order Entry
- On-The-Fly design customization
- Simple and easy programming in Excel
- Import orders from 3rd party systems
- Increase Quality, Production and Profits
- CADCode 5 integration for single part or nested manufacturing



CADCODE SYSTEMS

QuickCAM
FOR WOODWORKING 

Product Information:

QuickCAM™ MDF Door

Automated design & production of doors & drawer fronts.

Never before has there been such a powerful and easy to use system for manufacturing MDF doors. One person with reasonable data entry skills can enter enough customized doors to run a large nested router for a 10-hour shift in a matter of hours with 100% accuracy.

The developers of QuickCAM™ MDF Doors chose to take advantage of the world's most popular math program, Excel from Microsoft, to give the MDF Door manufacturer the easiest environment in which to create programs.

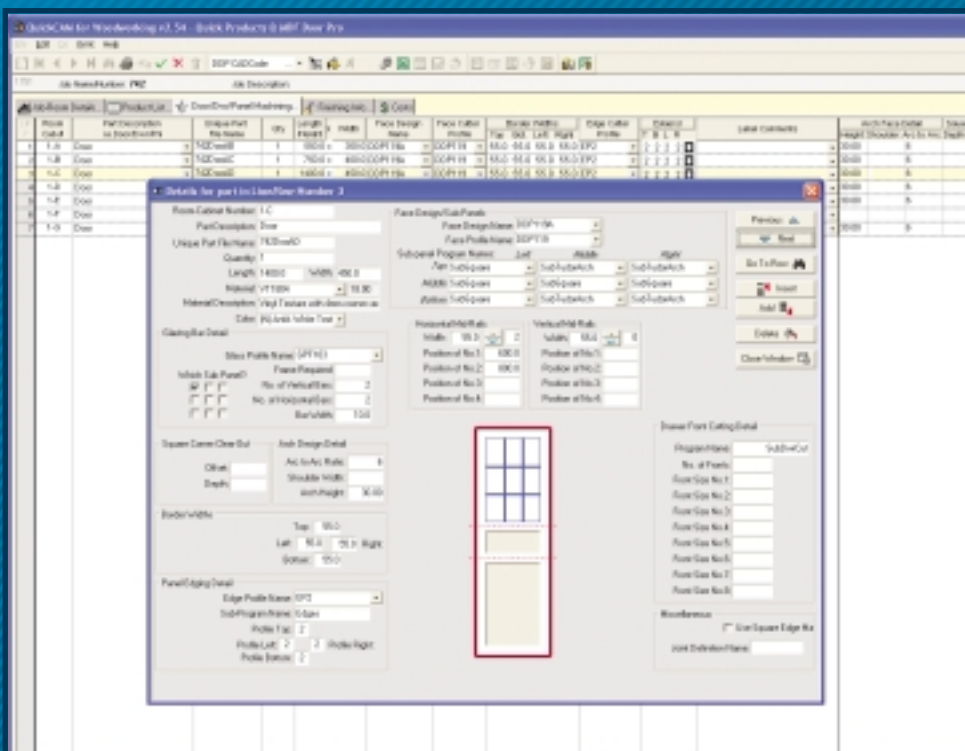
QuickCAM MDF Door is available in one of three configurations to meet a variety of price and feature considerations.

QuickDoor is an attractively priced straightforward solution. Enter doors directly or read from other systems, apply a door style and that's it. Data is ready to send to CADCode and your machine(s).

QuickCAM MDF Door provides all the features of QuickDoor with the added functionality of being able to make individual on-the-fly changes to variables that exist in your programs such as border



By taking advantage of the world's most popular math program, Excel from Microsoft, **QuickCAM MDF Doors** gives MDF Door manufacturers the easiest environment in which to create programs.



distances, positions of mid-rails and edge details, all controllable from the specially designed door detail interface.

QuickCAM MDF Door Pro is for MDF door manufacturers that require a system that can manage a larger amount of on-the-fly customization on a daily basis.

Hundreds of door designs can be produced as part of the company's normal product offering without the cost of maintaining hundreds of matching programs.

Kym Fox from Tech 2000 Doors Adelaide says, "We now have one twentieth of the programs to maintain whilst offering a more dynamic range of product."



916 Route 601, Skillman, NJ 08558 Fax: (609) 466-0027
Toll-free: (877) 422-3263 Web: www.cadcode.com
Telephone: (609) 466-0787 eMail: sales@cadcode.com



© 2002 - 2003 Country Cabinet Shop, Inc. Skillman, NJ. All rights reserved. Prices, policies, product descriptions and product specifications subject to change without notice. CADCode is a registered trademark of Country Cabinet Shop, Inc. dba CADCode Systems. NestLabels, NestLink, NestMaster, NestView, OptiLink, OptiNest, PartLink, PartMaster, PatternEditor, SawLabels, SawLink, SeeSaw, ToolboxX, and TransCode are trademarks of Country Cabinet Shop, Inc. dba CADCode Systems.

QuickCAM for Woodworking is a registered trademark of Lear Investments Pty Limited dba LearCom, Normanhurst NSW, AU. QuickCut, QuickTools, QuickParts, QuickProducts, QuickCAM Products, QuickCAM Products Pro, QuickDoor, QuickCAM MDF Door, QuickCAM MDF Door Pro are trademarks of LearCom.

AutoCAD® is a registered trademark of Autodesk Inc. Excel, MS Excel and Microsoft Excel are registered trademarks of Microsoft Corporation.

TPS 3378-0703