

The REAL Solution.

QuickCAM™ Products

Engineering software for parametrically controlled products

- Increase Quality, Productivity and Profits
- Unlimited product engineering and manufacturing possibilities
- Make cabinets, fixtures, countertops, doors, windows, specialty items
- Create parametric parts lists and CNC machining data
- 100% Control – 100% Accuracy
- Control unlimited number of user-defined variables
- Customizable user input validation and context sensitive help
- Automatically group grained parts
- Automatically model products in AutoCAD
- Quick & Easy Order Entry - Minutes instead of Hours
- Simple and easy programming in Excel
- Import from 3rd party estimating and order entry systems
- Full CADCode 5 integration for cell based or nest based manufacturing

CADCODE SYSTEMS

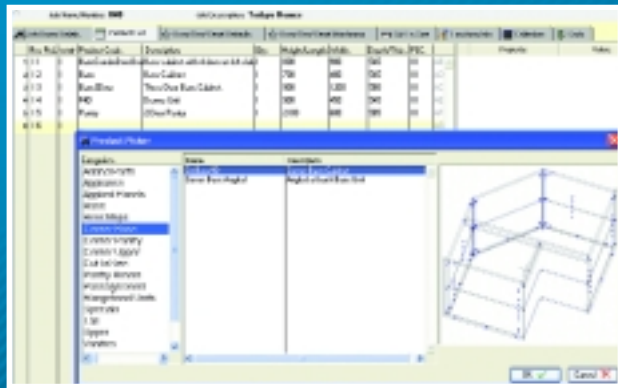
Quick**CAM**
FOR WOODWORKING 

Product Information:

QuickCAM™ Products

Automated engineering for parametrically controlled products

QuickCAM™ takes a huge leap forward in technology. For over a decade, manufacturers of flat panel products have been searching for a system to automate their production with 100% control and 100% accuracy.



Never before has there been such a powerful and easy to use system to create all the necessary job, product, part and machining information to manufacture a library of standard products or a complete range of parametric products with custom properties.



QuickCAM™ provides the tools to give you full control to create accurate and detailed manufacturing data for everything you make. You will get 100% accuracy every

time you send a product to your factory.

The developers of QuickCAM™ Products chose to take advantage of the world's most popular spreadsheet program, Excel from Microsoft, and incorporated it into the world's easiest to use interactive product development environment for you to build anything you want.

QuickCAM™ coupled with CADCode provides the most efficient manufacturing system from order entry to assembly.

QuickCAM™ is the fastest way to generate essential manufacturing data for:

- Store Fixtures
- Office Furniture
- Modular or Custom Cabinets
- Architectural Doors and Windows
- Solid Surface & Laminate Countertops
- Closet Components
- Just to name a few of the endless variety of products

QuickCAM™ Products are available in one of two configurations to meet your price & feature considerations.

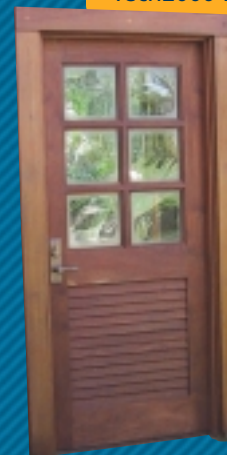
QuickCAM™ Products provides a core system for managing and adding order entry functionality to your product templates. An ala carte menu of options are available to enhance programming, importing of orders, reports and costing.

QuickCAM™ Products Pro is the complete products engineering environment. All system options are built-in, including access to global data tables and multiple configurations.



"QuickCAM™ & CADCode have changed the way we do everything for the better. It is so much more than we expected it to be. Production is up, quality is up and mistakes are down."

Mark Farquhar
Tech2000 Doors & Benchtops.



To enable QuickCam™ created products to CNC Machinery, a relative CADCode control is required.



916 Route 601, Skillman, NJ 08558 Fax: (609) 466-0027
Toll-free: (877) 422-3263 www.cadcode.com
Telephone: (609) 466-0787 sales@cadcode.com



© 2002 - 2003 Country Cabinet Shop, Inc. Skillman, NJ. All rights reserved. Prices, policies, product descriptions and product specifications subject to change without notice. CADCode is a registered trademark of Country Cabinet Shop, Inc. dba CADCode Systems. NestLabels, NestLink, NestMaster, NestView, OptiLink, OptiNest, PartLink, PartMaster, PatternEditor, SawLabels, SawLink, SeeSaw, ToolboxX, and TransCode are trademarks of Country Cabinet Shop, Inc. dba CADCode Systems.

QuickCAM for Woodworking is a registered trademark of Lear Investments Pty Limited dba LearCom, Normanhurst NSW, AU. QuickCut, QuickTools, QuickParts, QuickProducts, QuickCAM Products, QuickCAM Products Pro, QuickDoor, QuickCAM MDF Door, QuickCAM MDF Door Pro are trademarks of LearCom.

AutoCAD® is a registered trademark of Autodesk Inc. Excel, MS Excel and Microsoft Excel are registered trademarks of Microsoft Corporation.